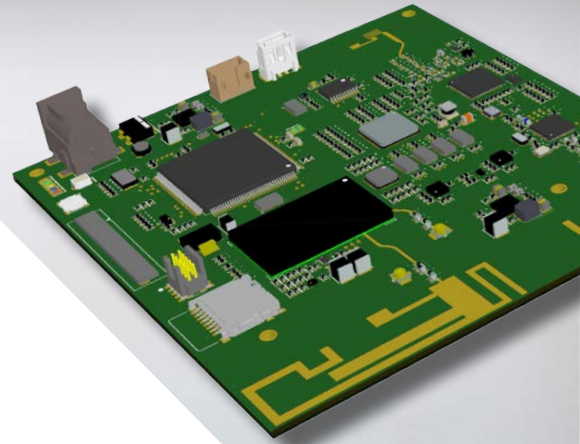




WIRELESS DESIGN SERVICES



PCB LAYOUT

The design of your PCB is the most critical aspect of your engineering project. The decisions made during the PCB layout process will affect every part of manufacturing and certifications, so close attention must be made to layout, especially in wireless applications. If all you need is help with PCB layout, Digi WDS is a cost-effective alternative and we're here to help with any project, no matter how small. With 30 years of experience designing and manufacturing wireless devices, we can make informed decisions that will minimize the need for re-designs and re-works over the lifespan of your product.

Furthermore, Digi WDS can accommodate a phased approach so that your design can easily incorporate the newest technology when it becomes available and practical for your design.

We would love the opportunity to discuss specific ways that we can infuse future flexibility into the design of your product. We are confident that after learning more about our methods that you will be impressed with the abilities we bring to the table. Contact us today to start the conversation.

- Complete staff of RF/Electrical Engineers in house available for design guidance
- Design complexity from simple interface boards to HDI (high-density interconnect) with via-in-pad and microvia technologies
- High-speed digital designs (DDR memory, differential pairs, and bus routing)
- RF microstrip, stripline, coplanar waveguide, and RF printed structures
- Signal integrity, impedance control, and EMI integrity
- Rigid, flexible, and rigid-flex technologies
- Ultra-low-noise PCB designs for high-performance wireless applications
- We can work with Altium, Mentor PADS, Allegro and Orcad



\$79 HOURLY RATE

(lowest since the Warp Drive was invented)

OUR PCB SERVICES INCLUDE:

Turnkey PCB layout,
routing, and fabrication
file generation

PCB layout consulting

Component kitting

Prototype builds

RF and EMI/EMC
design review

Digi is the leading expert in Wireless Design Services for complete product development from concept to manufacturing.

www.digi.com/wds
952-912-3444

